

Surveillance of antimicrobial resistant bacteria in Belgian hospitals

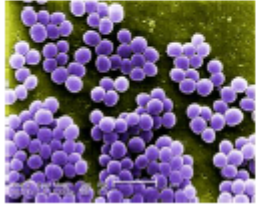
Feedback: 2018

Acute care hospital data only

Your NSIH code: 1105

Your ID (figures): 16A

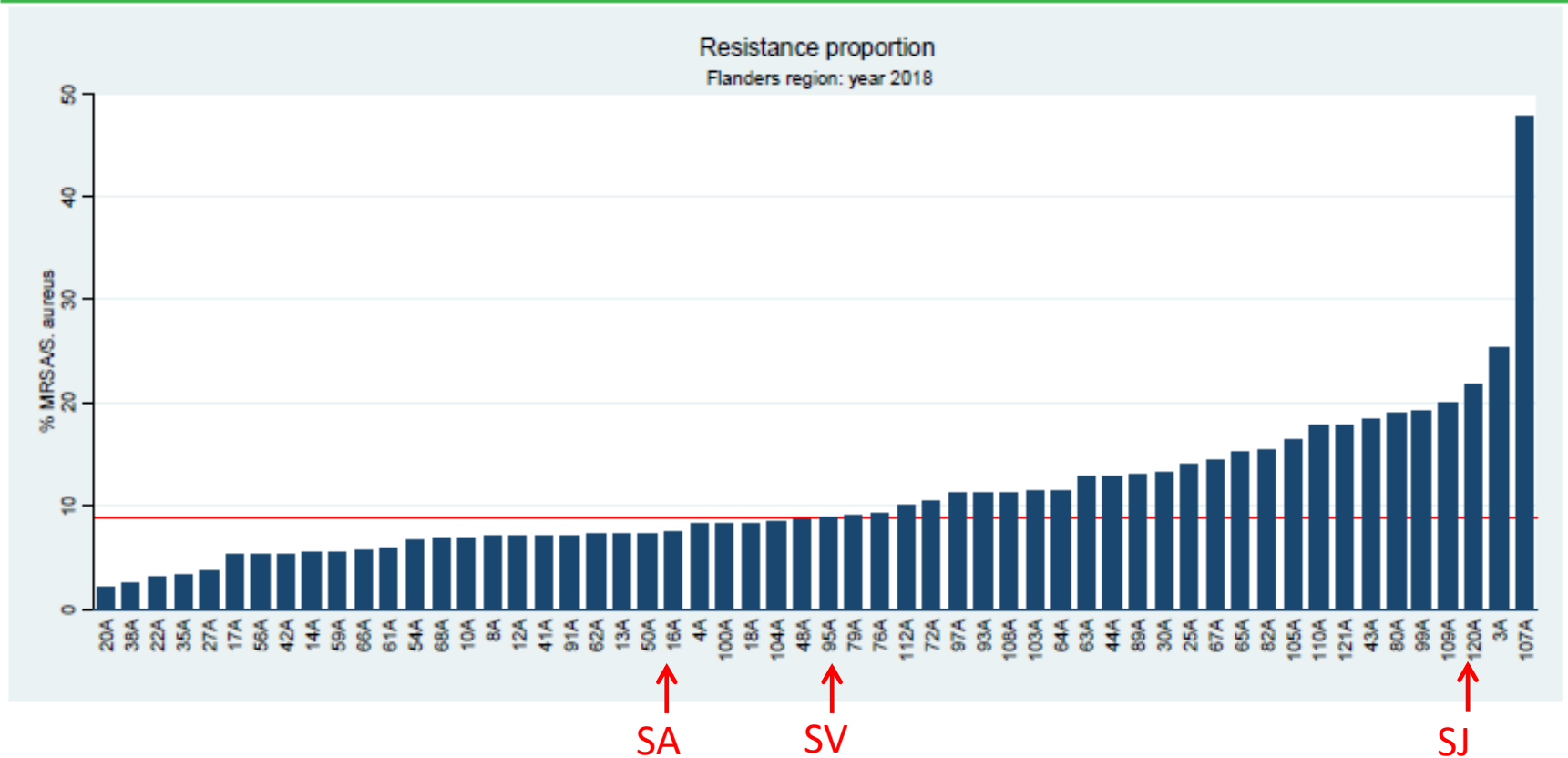
Part 1: Gram-positive Bacteria



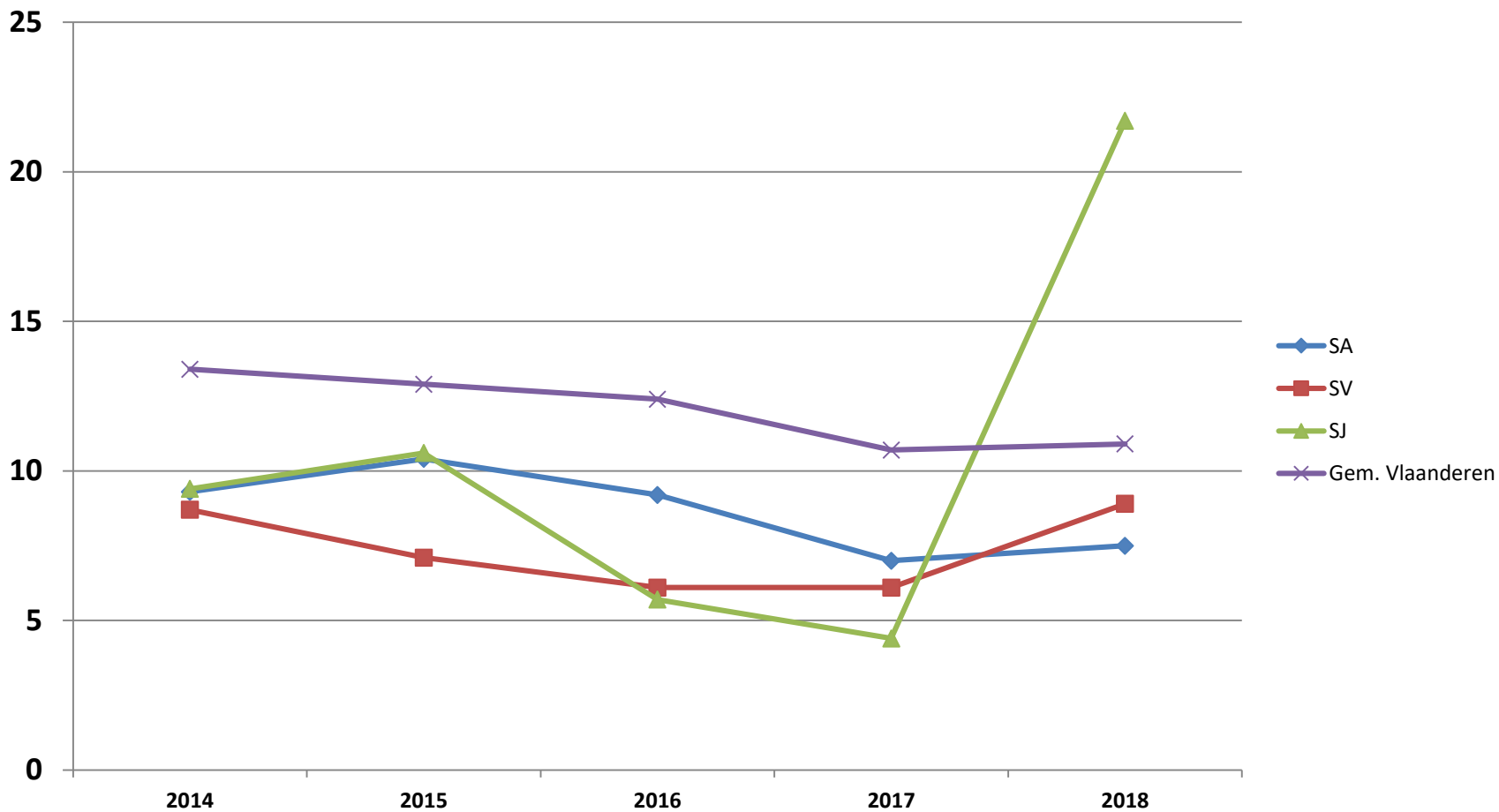
Methicillin Resistant *Staphylococcus aureus*
(MRSA)

MRSA SA- SV-SJ

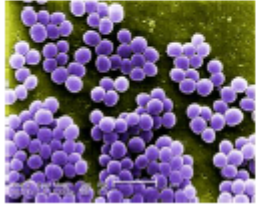
FIGURE 1. MRSA RESISTANCE PROPORTION (%) IF REGION = FLANDERS



Evolutie MRSA (%)



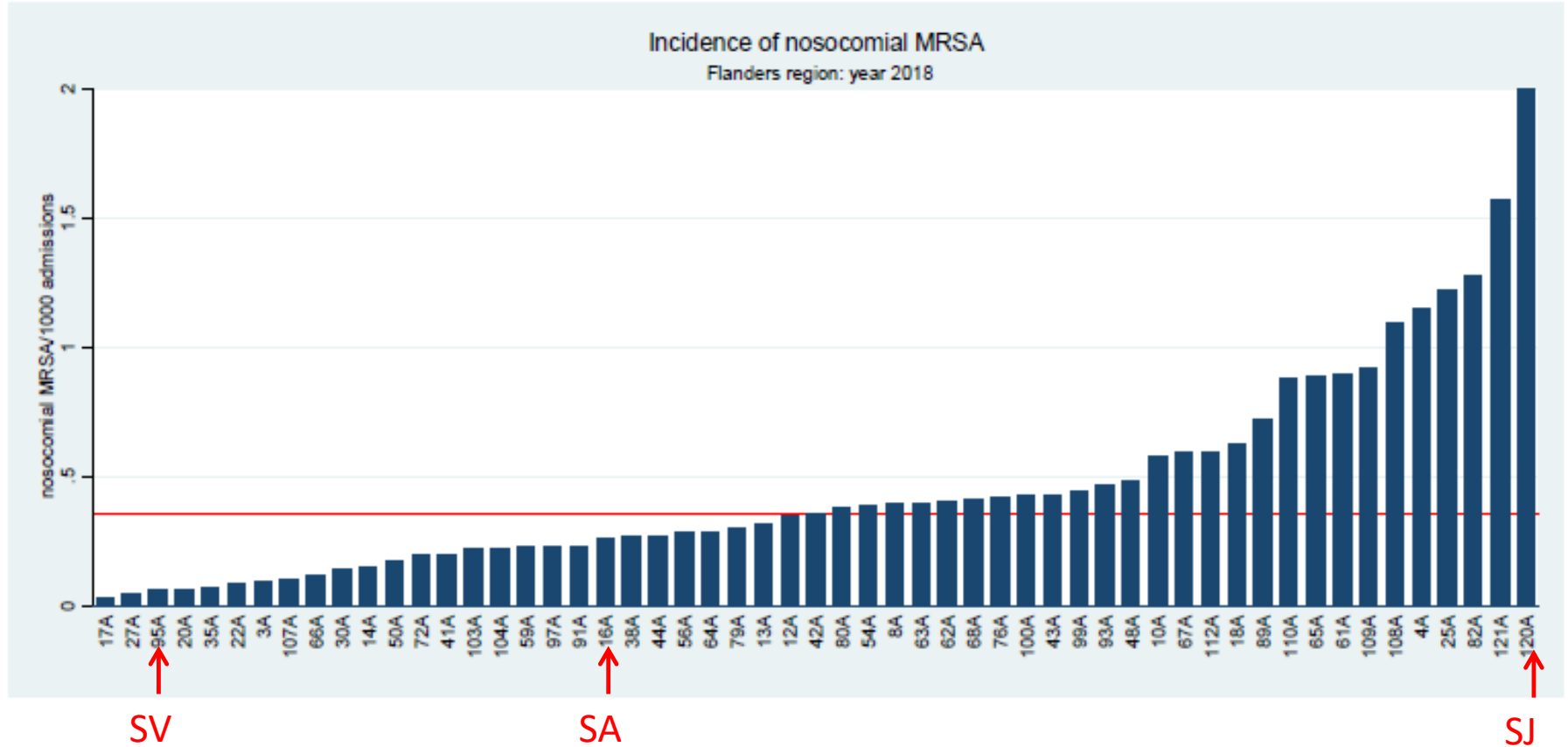
Part 1: Gram-positive Bacteria



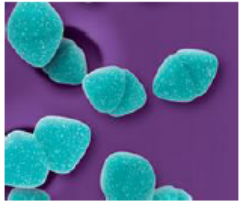
Methicillin Resistant *Staphylococcus aureus*
(MRSA)

MRSA SA- SV-SJ

FIGURE 2. INCIDENCE OF NOSOCOMIAL MRSA PER 1000 ADMISSIONS IF REGION= FLANDERS



Part 1: Gram-positive Bacteria

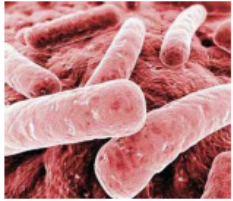


Resistance mechanisms in
Enterococcus faecalis and *Enterococcus faecium*

VRE **SA-**
SV-SJ



Part 2: Gram-negative Bacteria

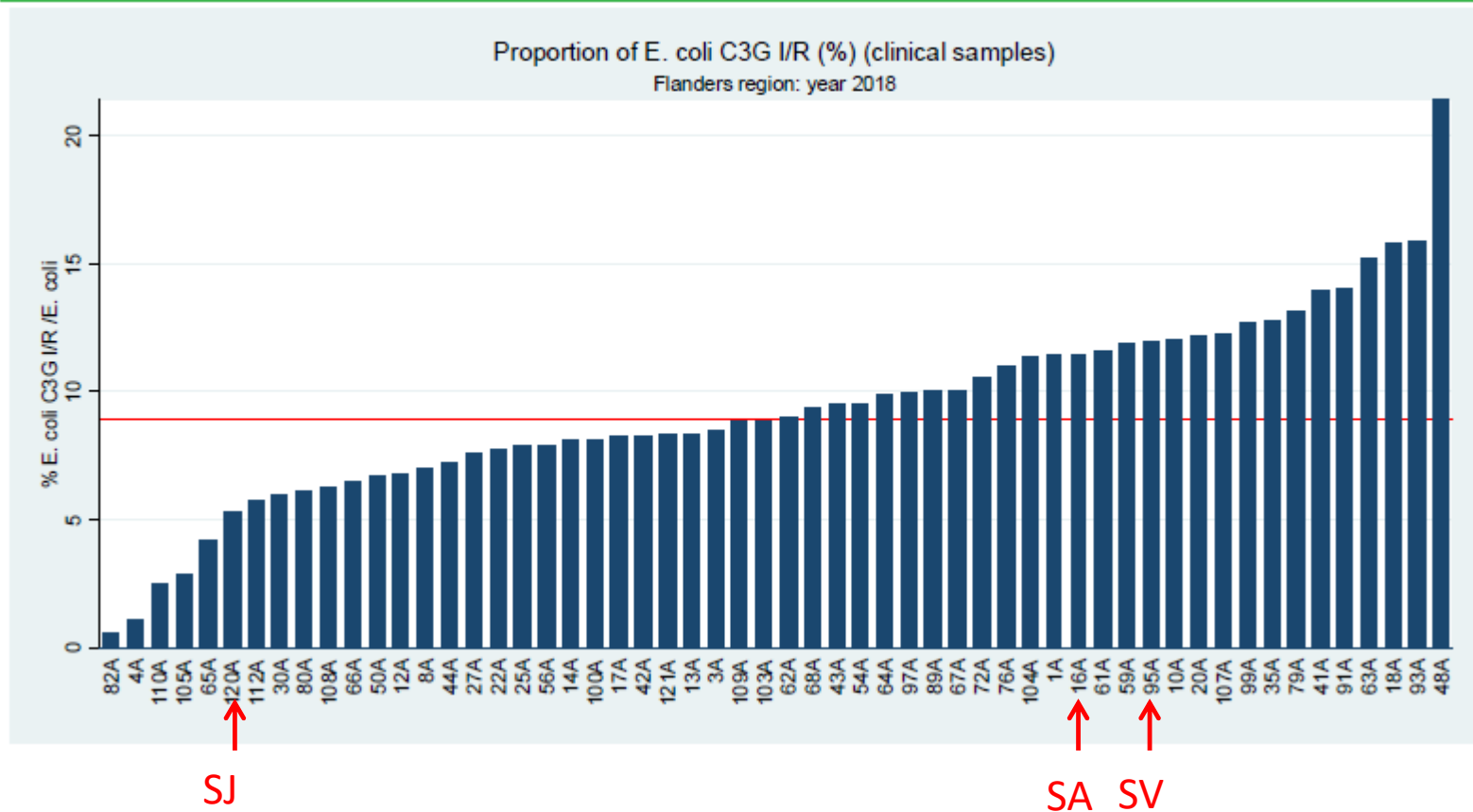


Resistance mechanisms in *Enterobacteriaceae*

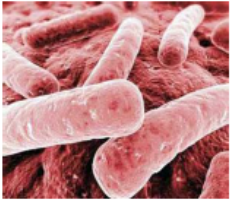
E.coli/Ceph3/4

SA-SV-SJ

FIGURE 4. PROPORTION OF C3G I/R *ESCHERICHIA COLI* (%) IF REGION = FLANDERS



Part 2: Gram-negative Bacteria

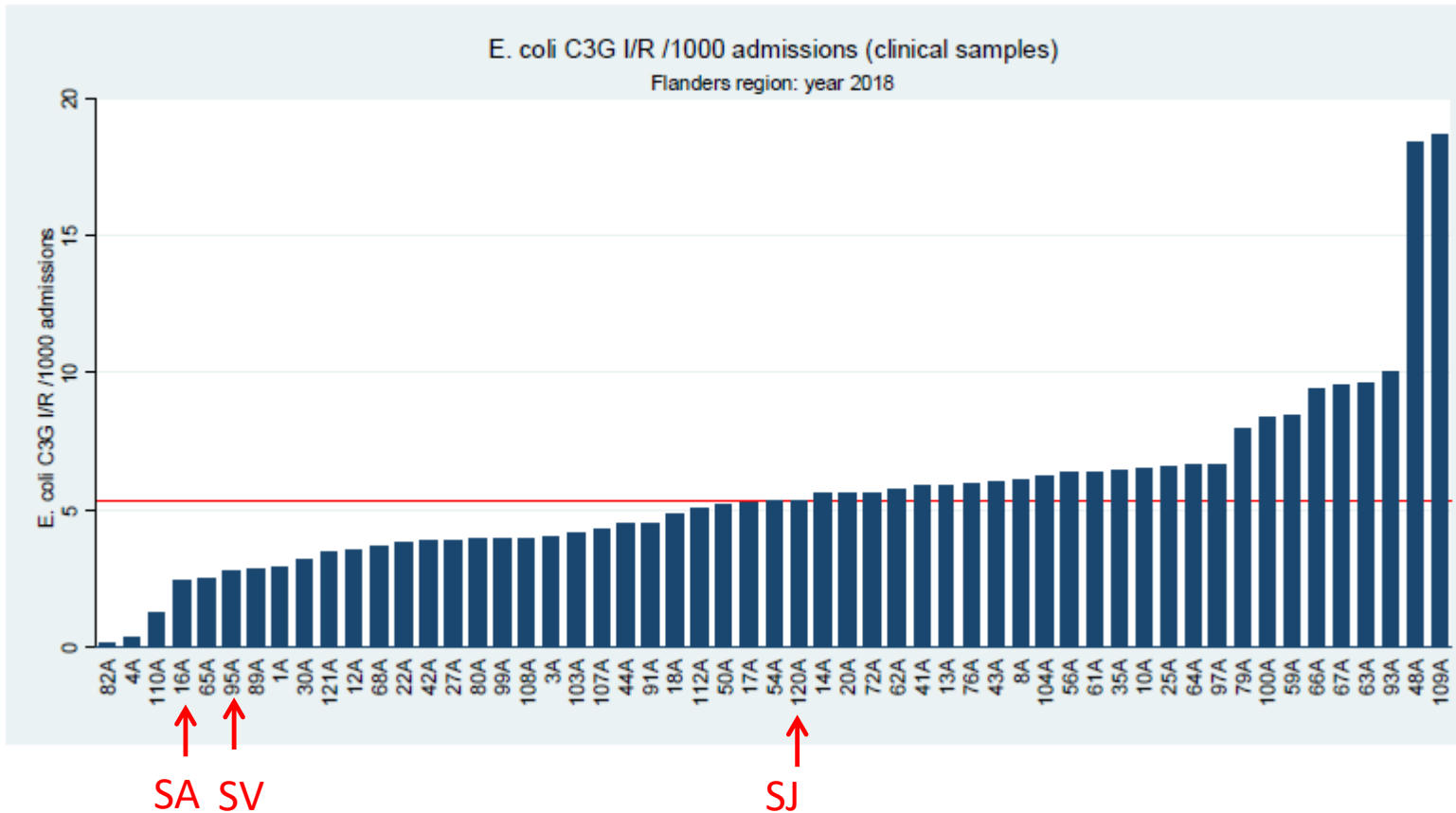


Resistance mechanisms in *Enterobacteriaceae*

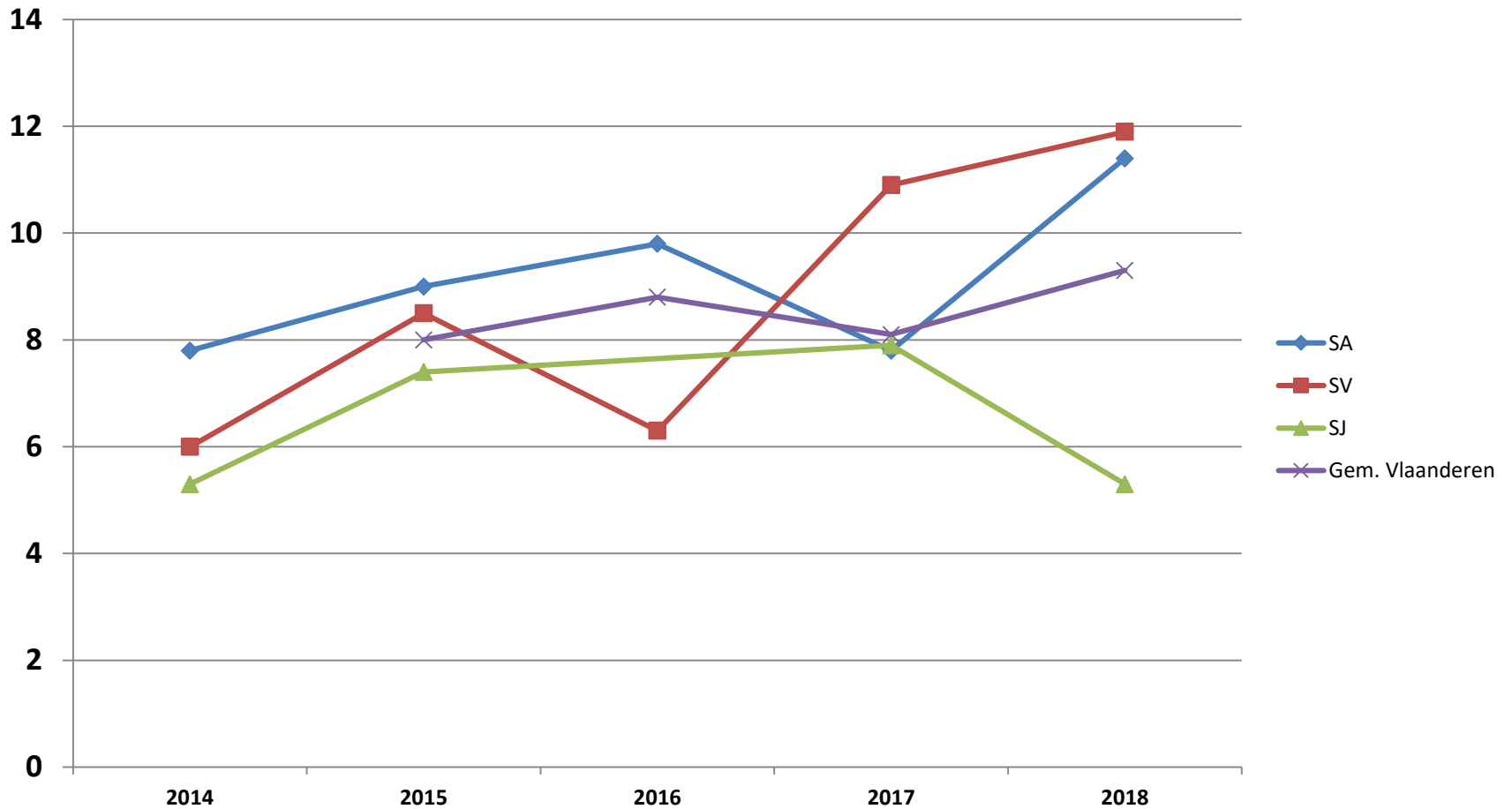
E.coli/Ceph3/4

SA-SV-SJ

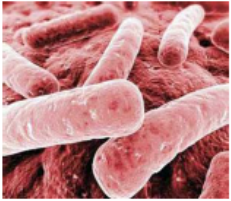
FIGURE 5. INCIDENCE OF C3G I/R *ESCHERICHIA COLI* (/1000 ADMISSIONS) IF REGION = FLANDERS



E. coli ceph3/4 resistant/totaal E.coli (%)



Part 2: Gram-negative Bacteria

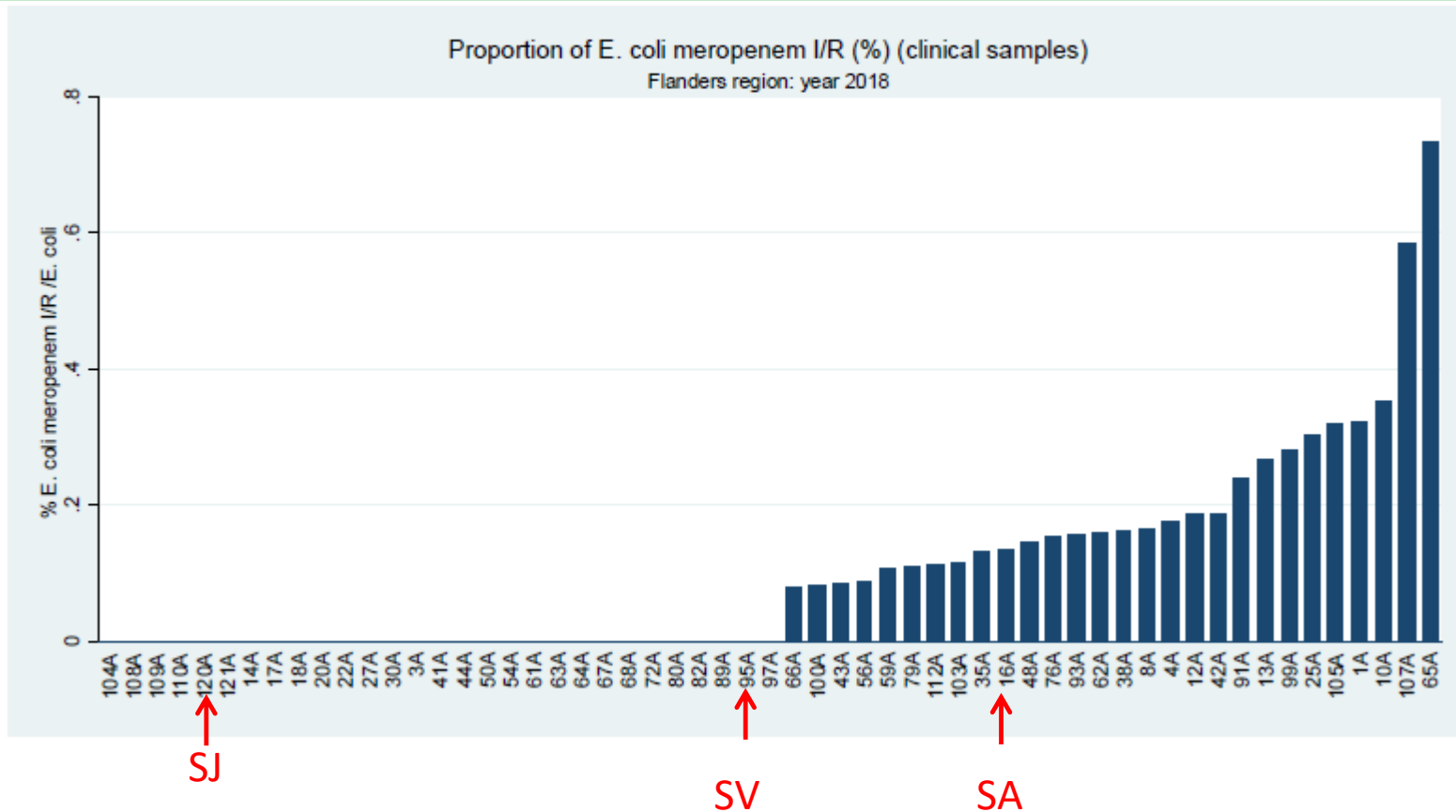


Resistance mechanisms in *Enterobacteriaceae*

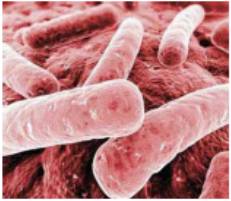
E.coli/Meropen

SA-SV-SJ

FIGURE 6. PROPORTION OF MEROPENEM I/R *ESCHERICHIA COLI* (%) IF REGION = FLANDERS



Part 2: Gram-negative Bacteria

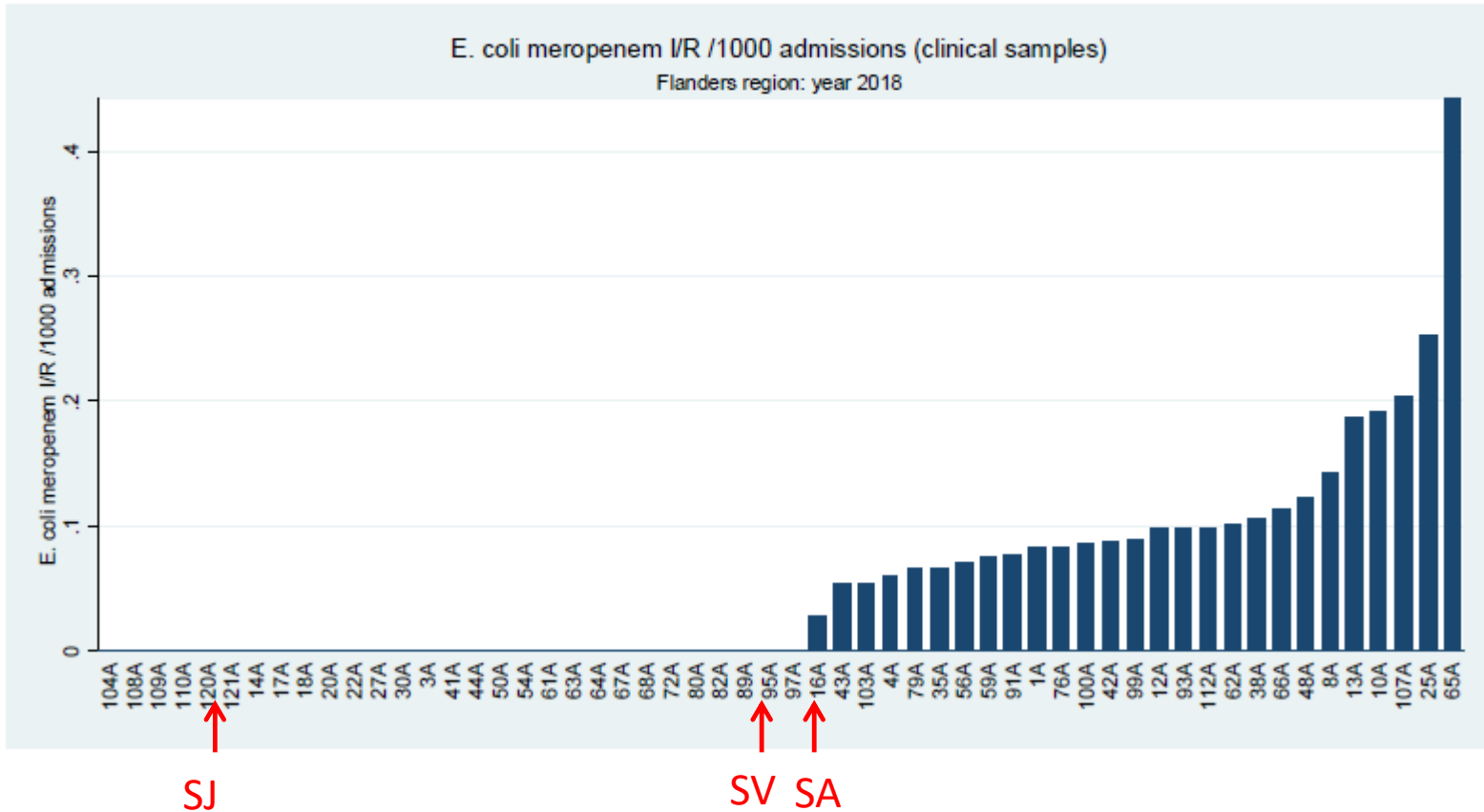


Resistance mechanisms in *Enterobacteriaceae*

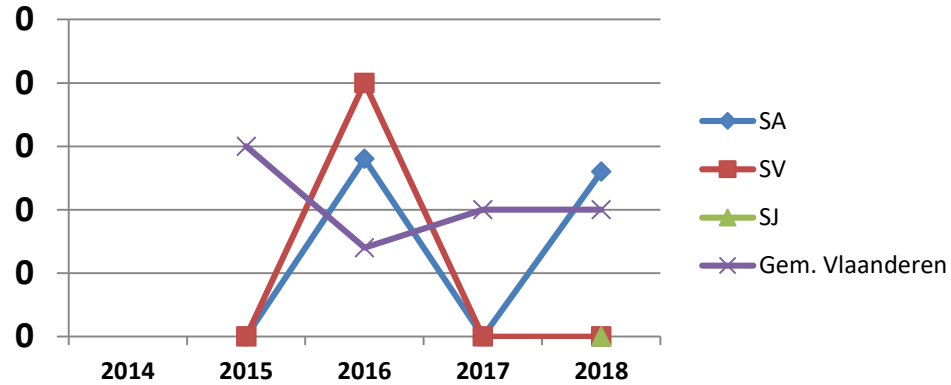
E.coli/Meropen

SA-SV-SJ

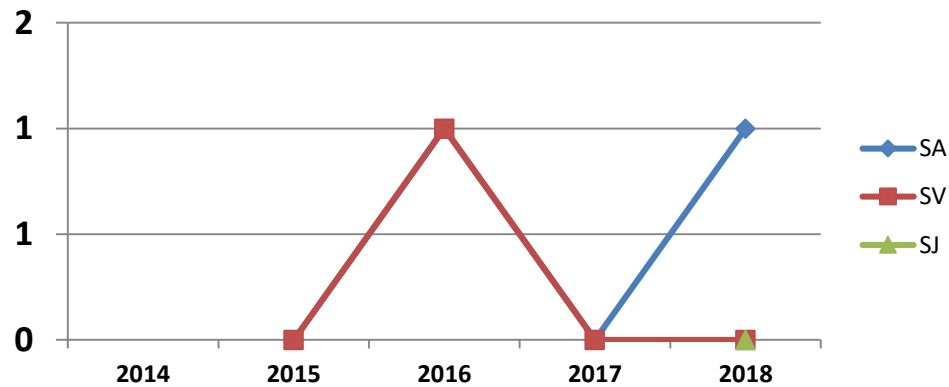
FIGURE 7. INCIDENCE OF MERO I/R *ESCHERICHIA COLI* (/1000 ADMISSIONS) IF REGION = FLANDERS



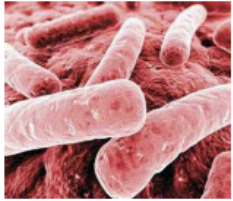
E. coli meropenem I/R klinische isolaten totaal (%)



E. coli meropenem I/R klinische isolaten totaal (absoluut)



Part 2: Gram-negative Bacteria

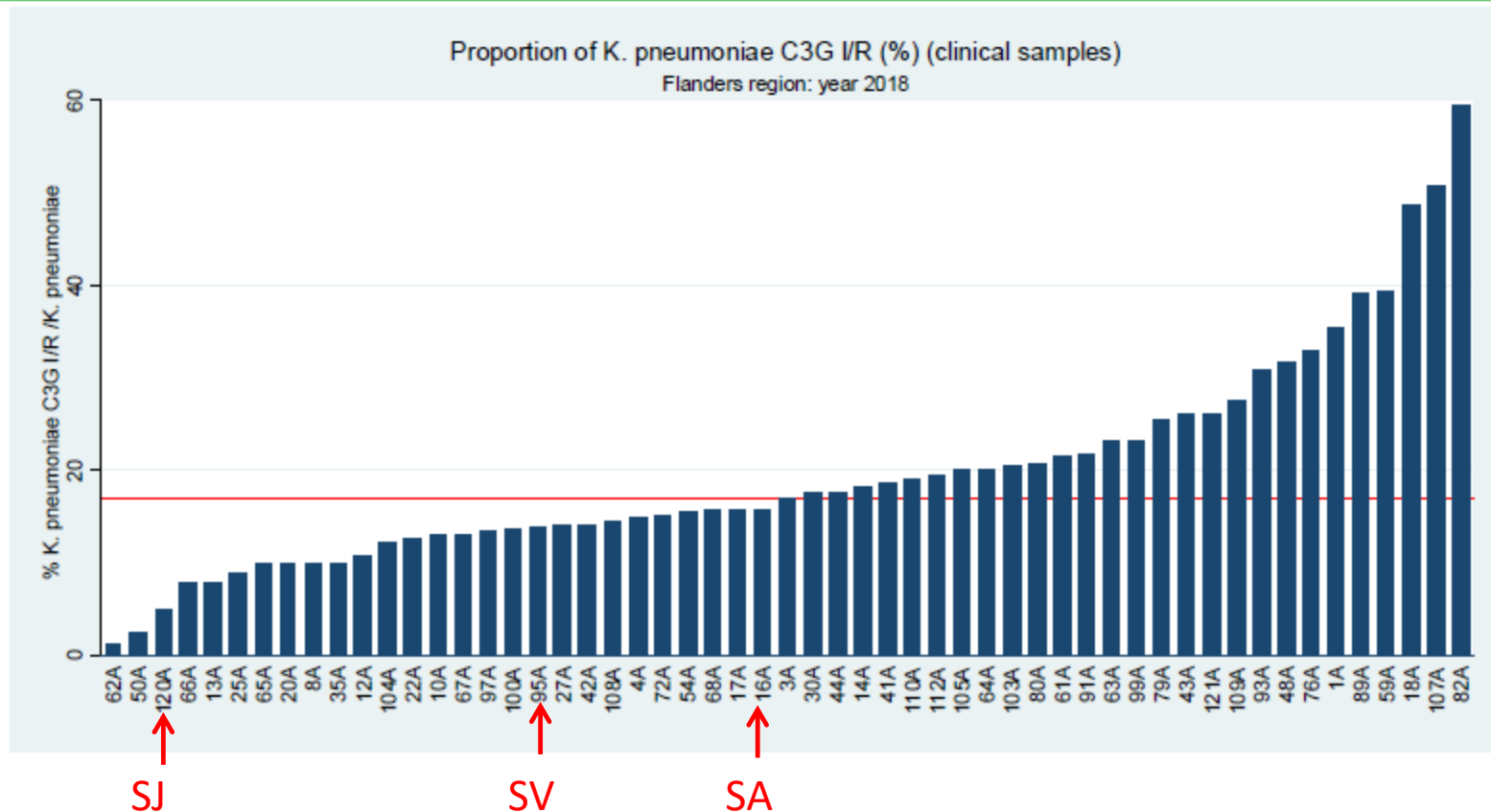


Resistance mechanisms in *Enterobacteriaceae*

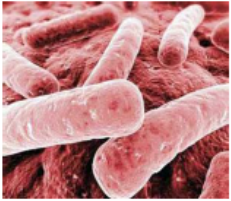
K.pneum/Ceph3/4

SA-SV-SJ

FIGURE 8. PROPORTION OF C3G I/R *KLEBSIELLA PNEUMONIAE* (%) IF REGION = FLANDERS



Part 2: Gram-negative Bacteria

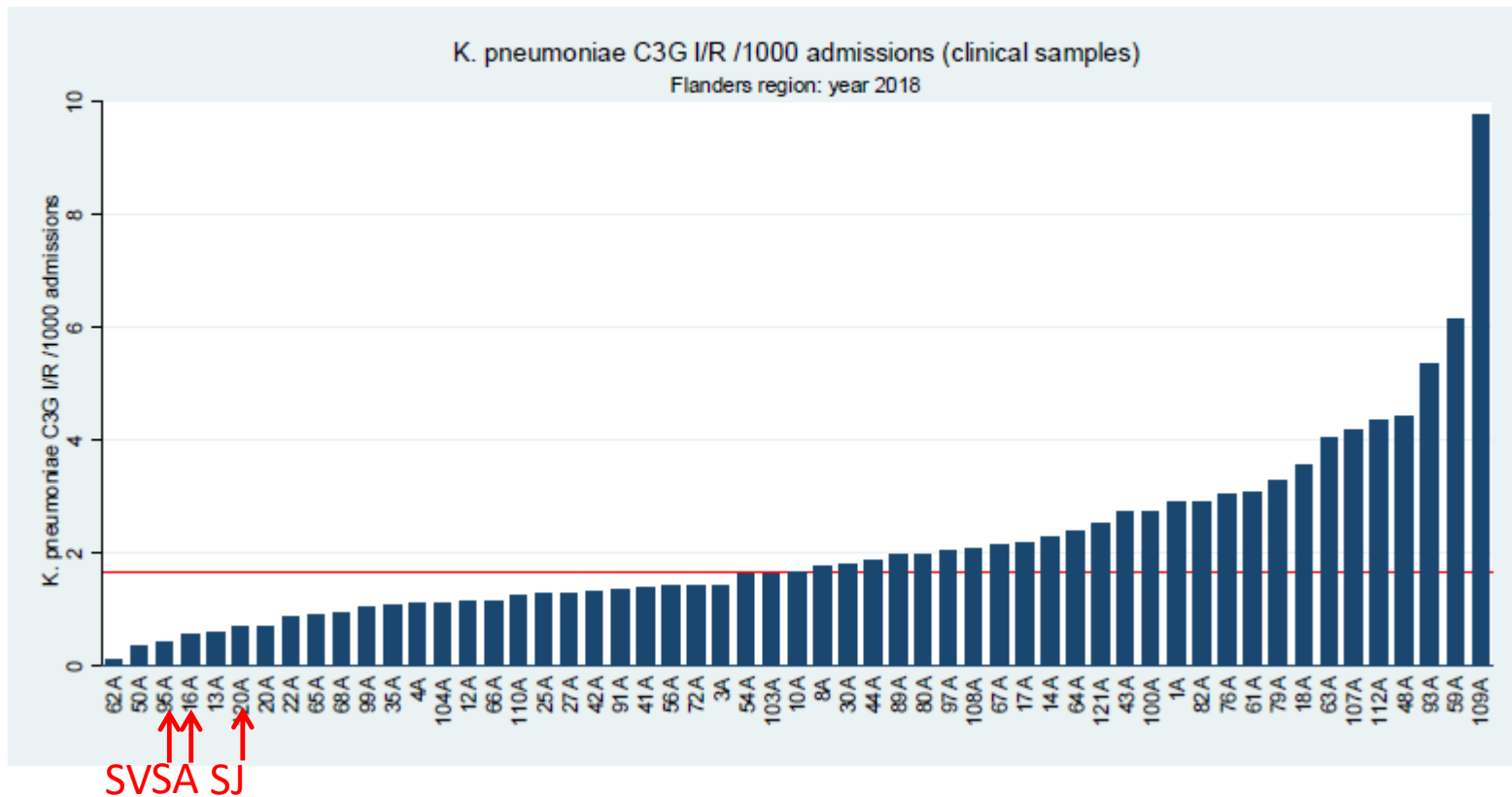


Resistance mechanisms in *Enterobacteriaceae*

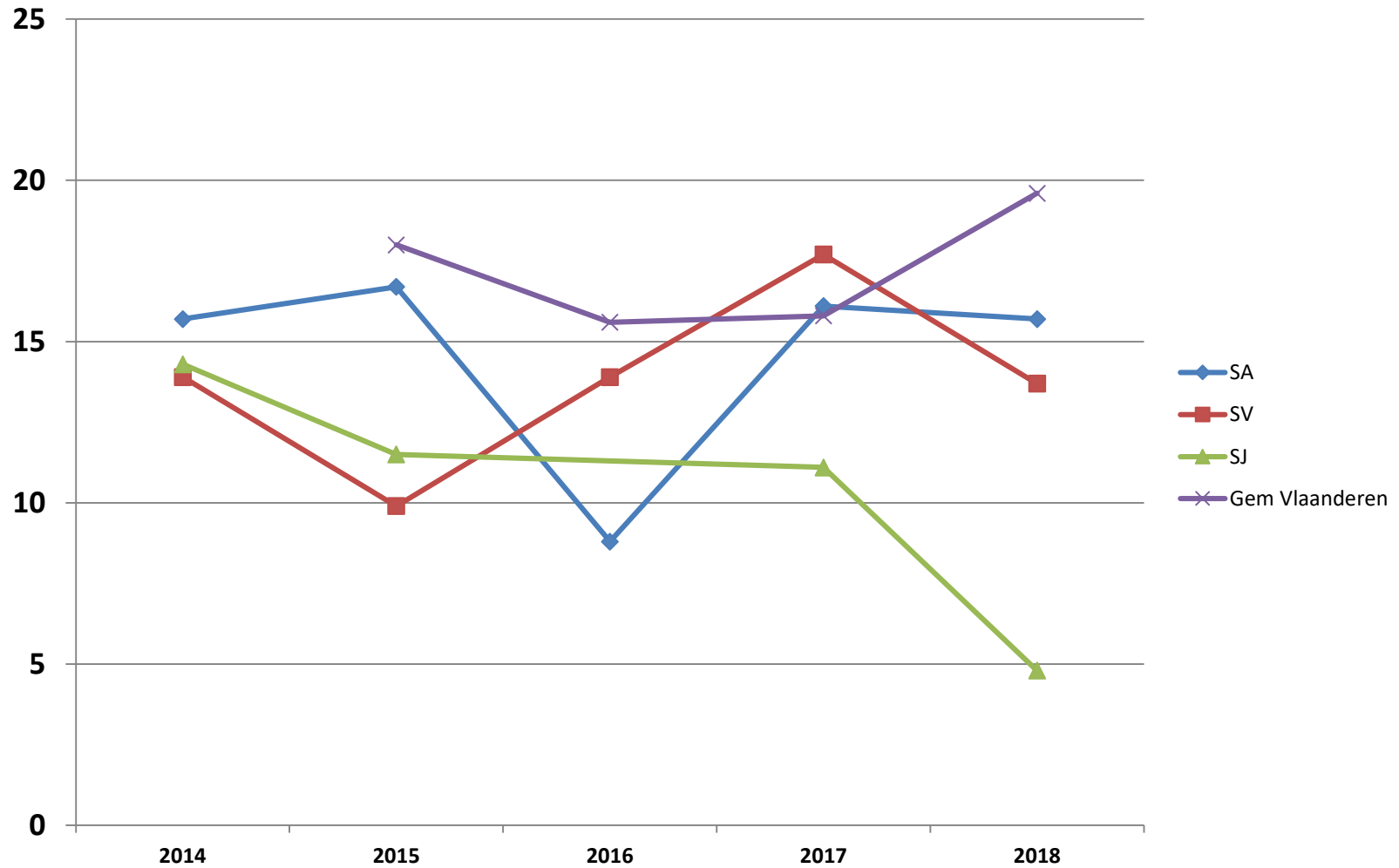
K.pneum/Ceph3/4

SA-SV-SJ

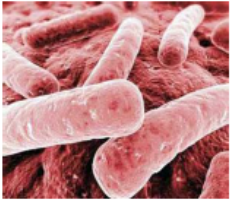
FIGURE 9. INCIDENCE OF C3G I/R *KLEBSIELLA PNEUMONIAE* (/1000 ADM) IF REGION = FLANDERS



K. pneumoniae cep3/4 resistant/totaal (%)



Part 2: Gram-negative Bacteria

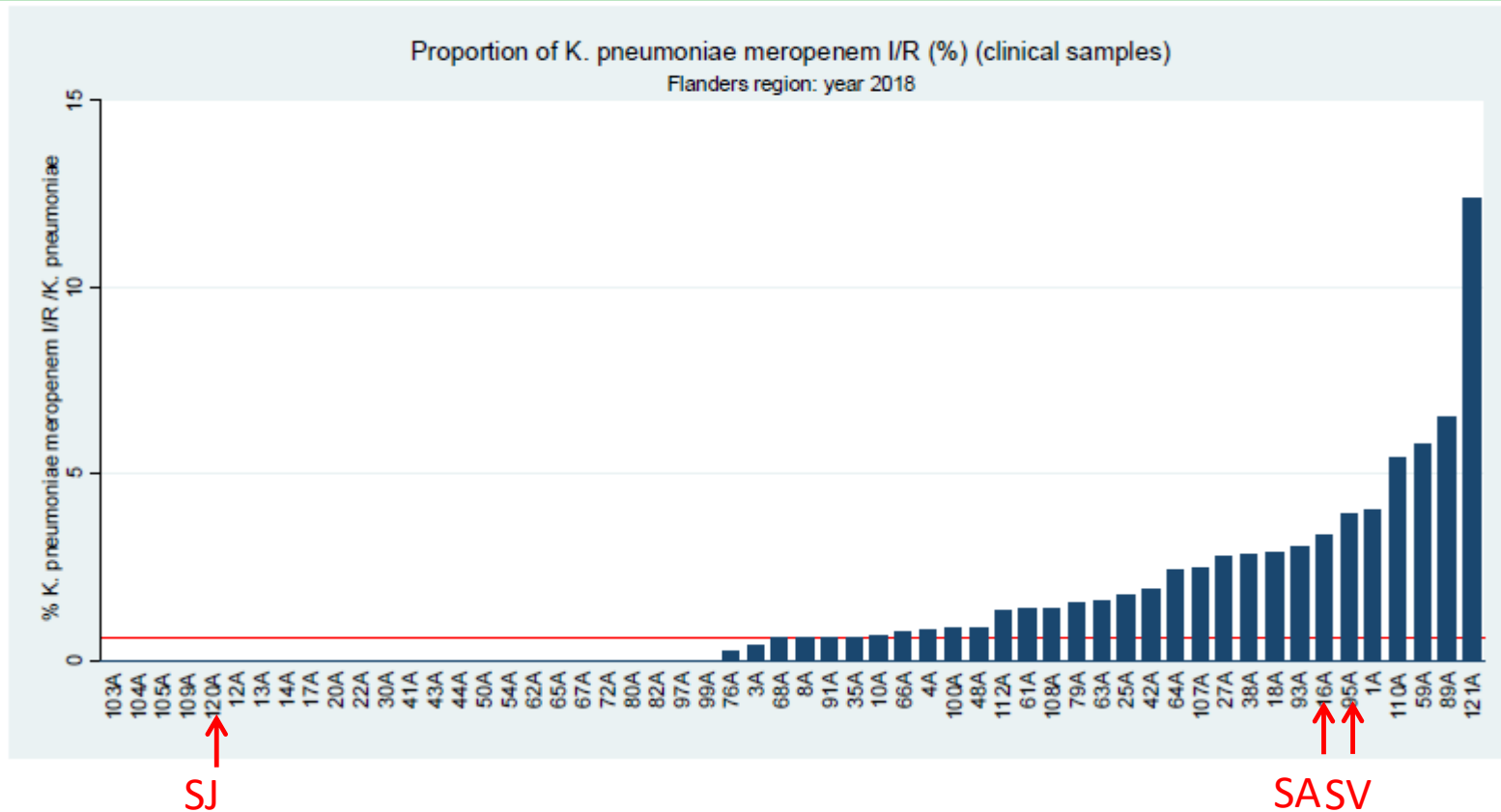


Resistance mechanisms in *Enterobacteriaceae*

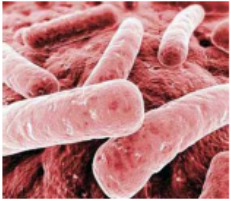
K.pneum/Meropen

SA-SV-SJ

FIGURE 10. PROPORTION OF MEROPENEM I/R *KLEBSIELLA PNEUMONIAE* (%) IF REGION = FLANDERS



Part 2: Gram-negative Bacteria

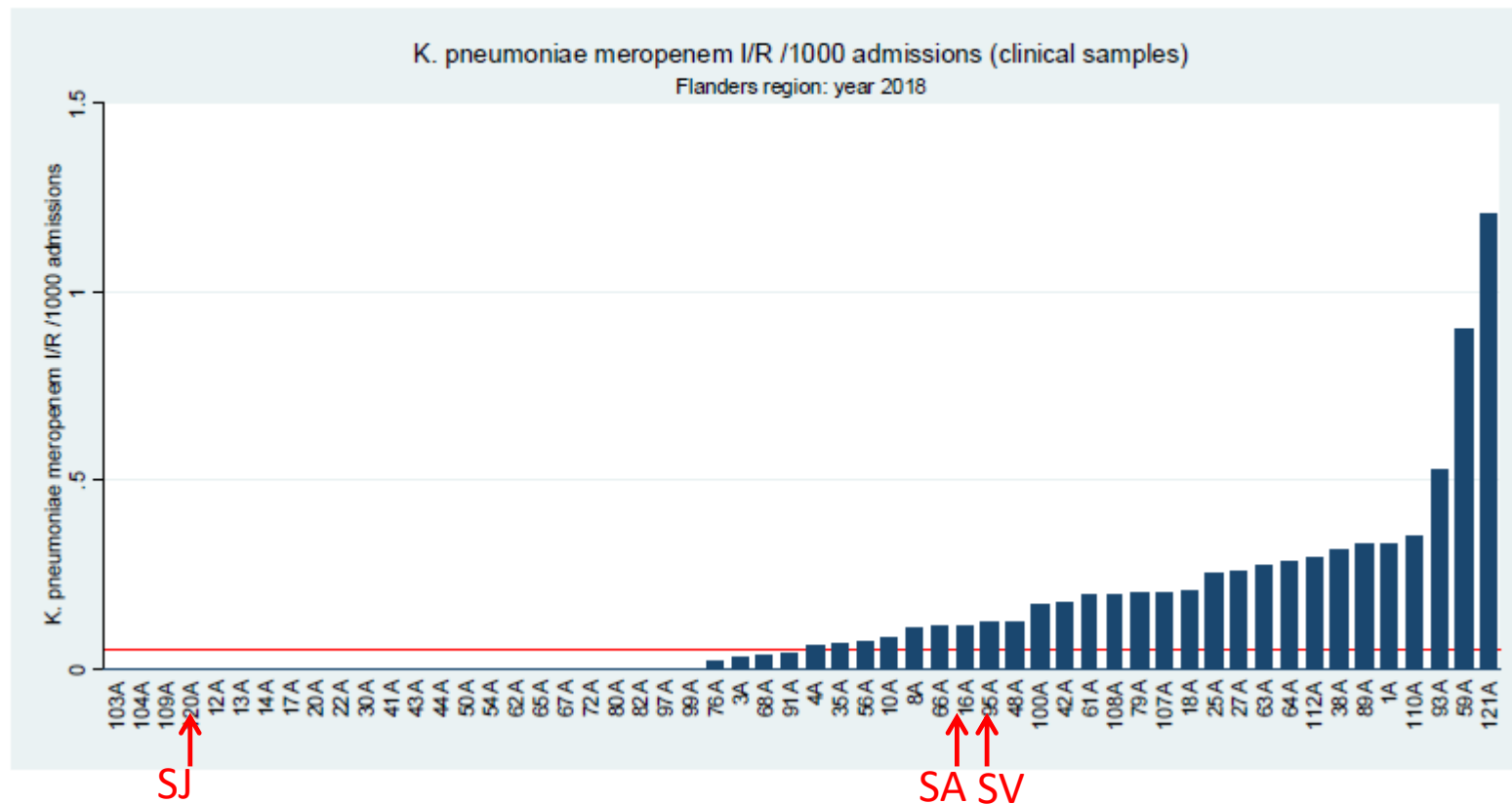


Resistance mechanisms in *Enterobacteriaceae*

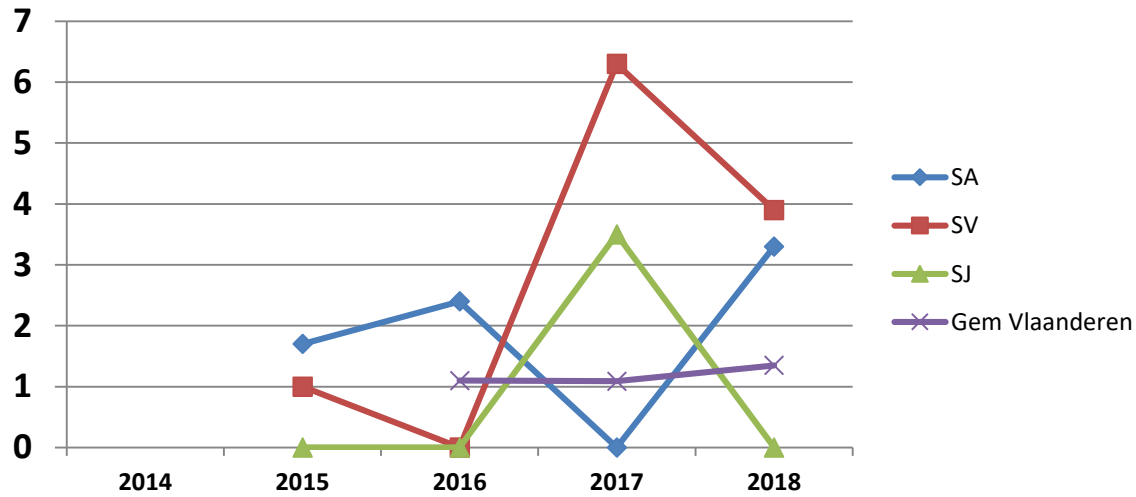
K.pneum/Meropen

SA-SV-SJ

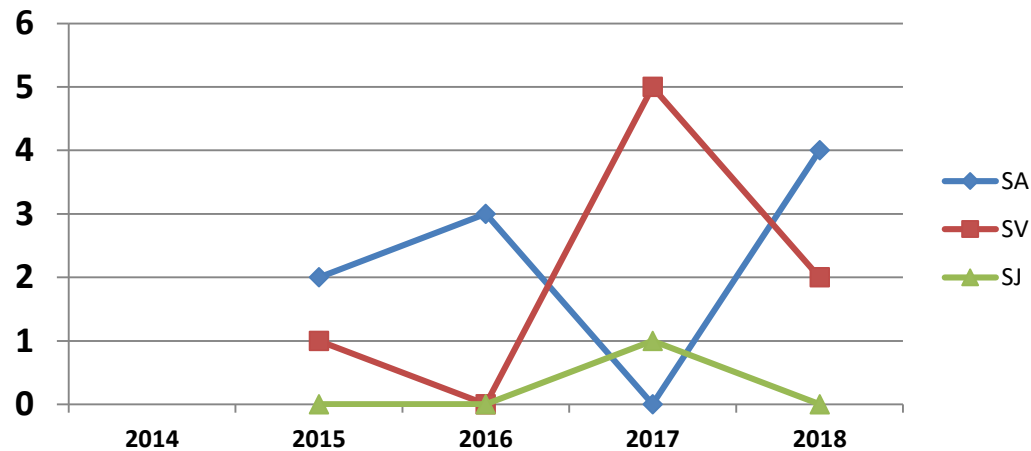
FIGURE 11. INCIDENCE OF MERO I/R *KLEBSIELLA PNEUMONIAE* (/1000 ADM) IF REGION = FLANDERS



K. pneumoniae meropenem I/R/ totaal klinische isolaten(%)



K. pneumoniae meropenem I/R klinische isolaten totaal



Part 2: Gram-negative Bacteria

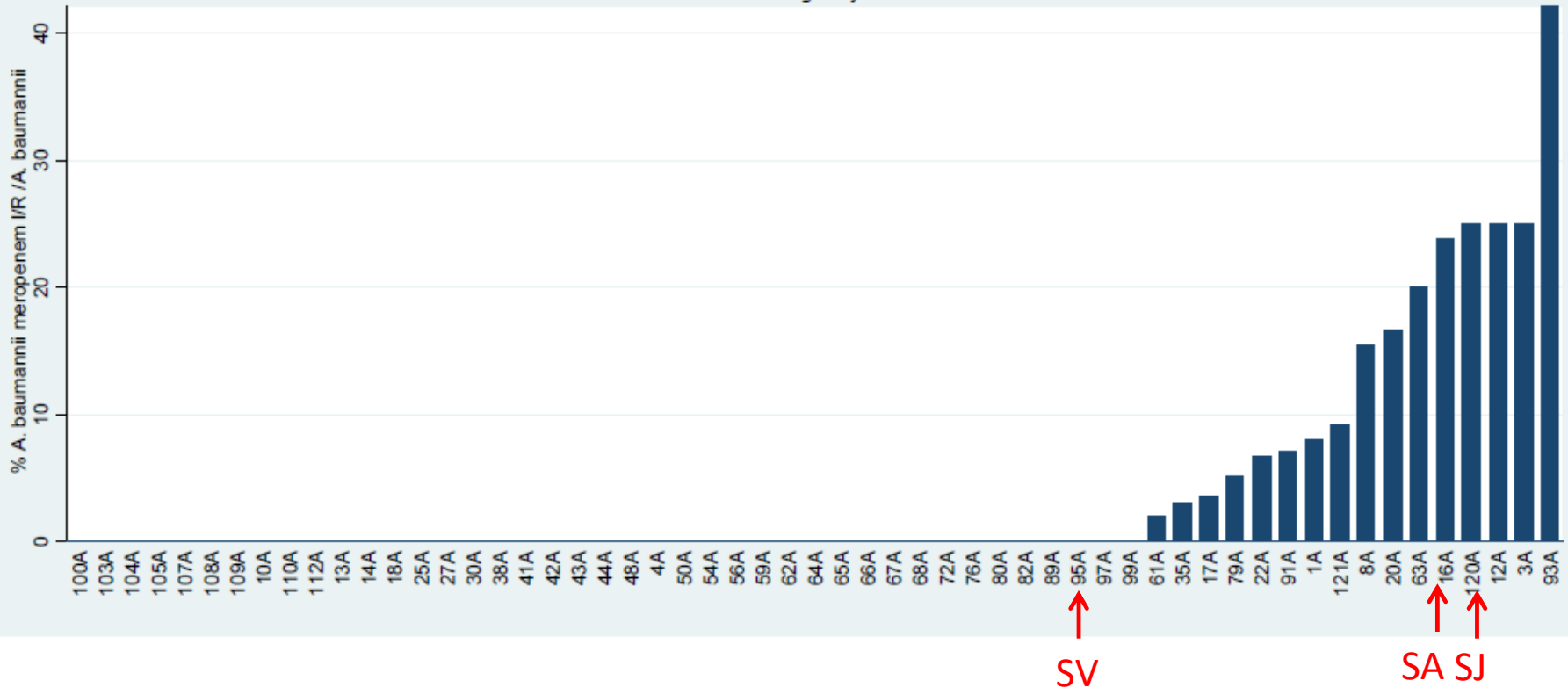


Resistance mechanisms in
Acinetobacter baumannii and in
Pseudomonas aeruginosa

A.baum/Meropenem
SA-SV-SJ

FIGURE 12. PROPORTION OF MEROPENEM I/R *A. BAUMANNII* (%) IF REGION = FLANDERS

Proportion of *A. baumannii* meropenem I/R (%) (clinical samples)
Flanders region: year 2018



Part 2: Gram-negative Bacteria

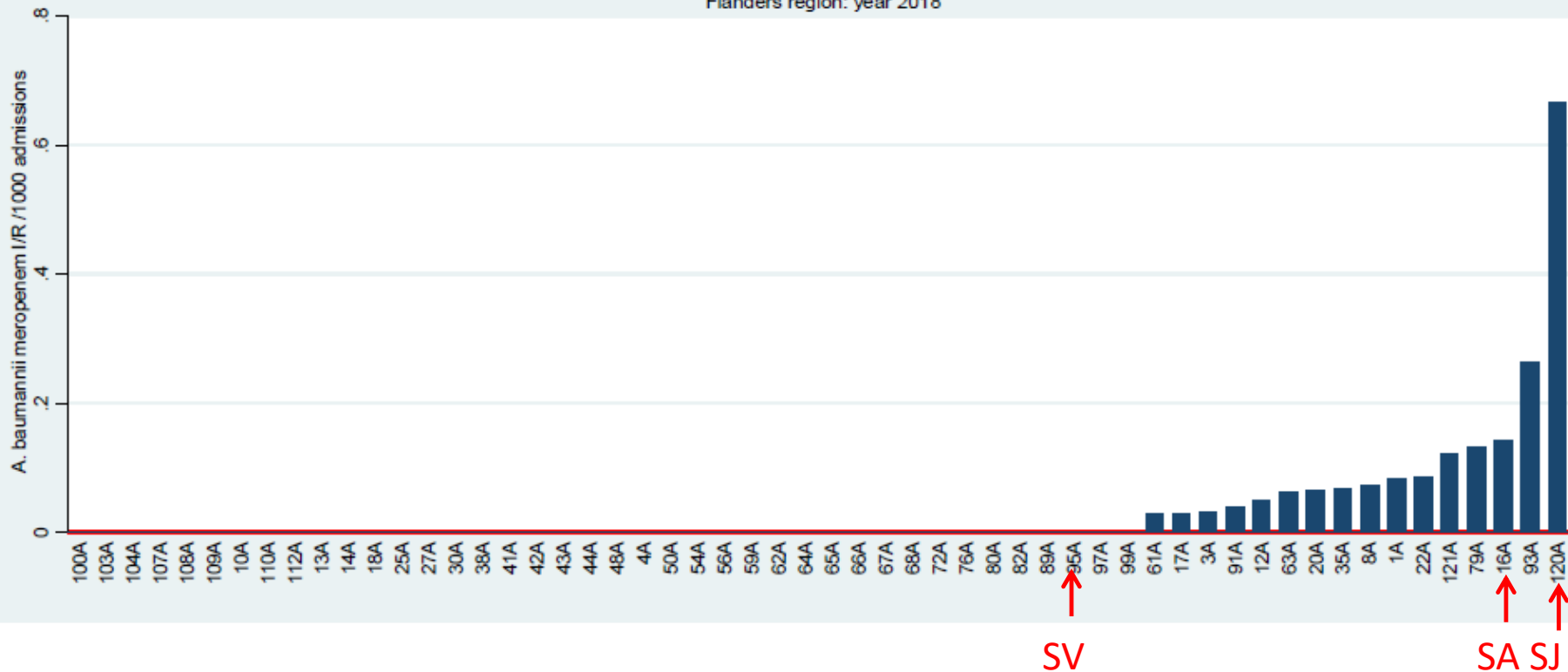


Resistance mechanisms in
Acinetobacter baumannii and in
Pseudomonas aeruginosa

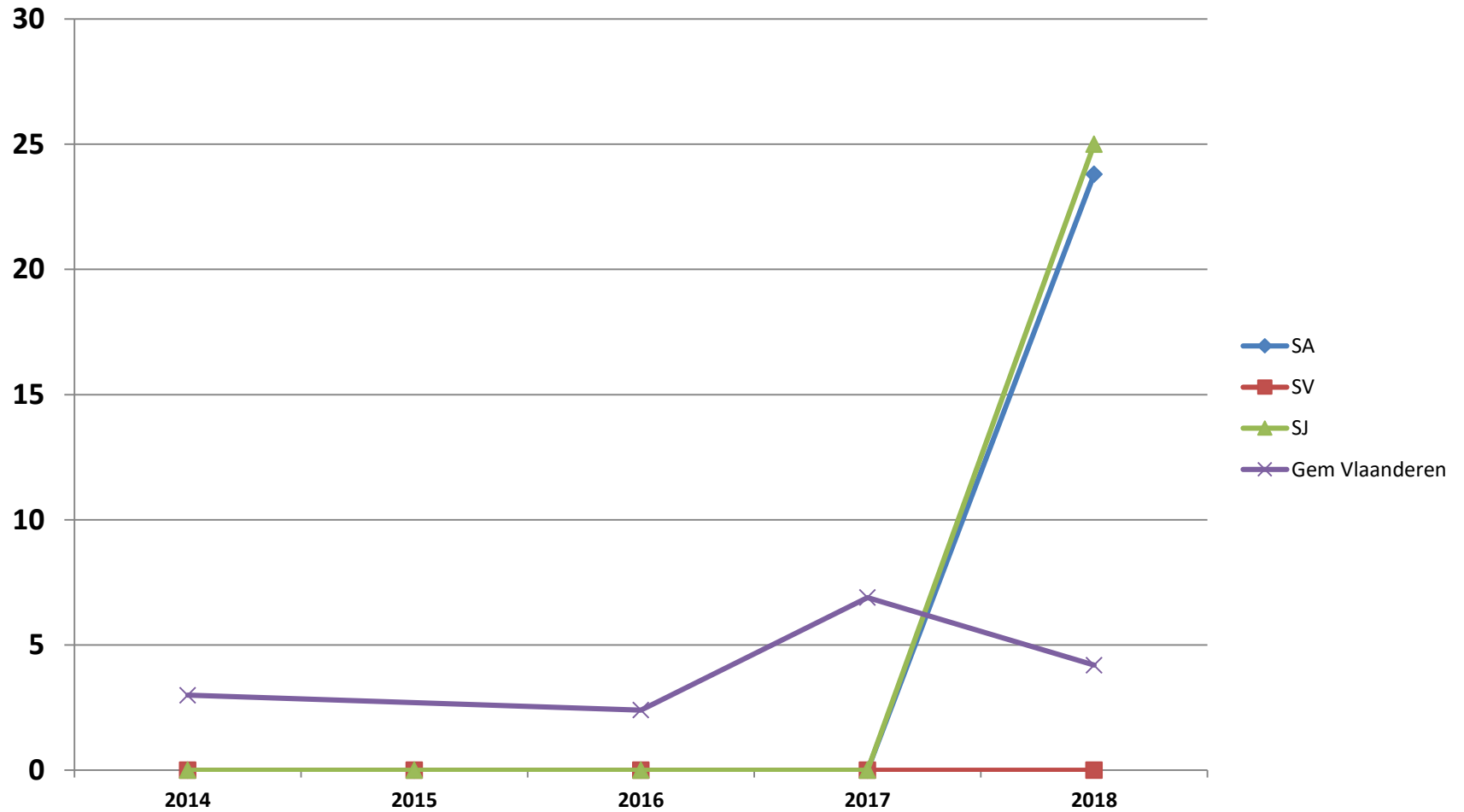
A.baum/Meropen
SA-SV-SJ

FIGURE 13. INCIDENCE OF MEROPENEM I/R *A. BAUMANNII* (/1000 ADMISSIONS) IF REGION = FLANDERS

A. baumannii meropenem I/R /1000 admissions (clinical samples)
Flanders region: year 2018



A. Baum meropenem I-R/totaal (%)



Part 2: Gram-negative Bacteria



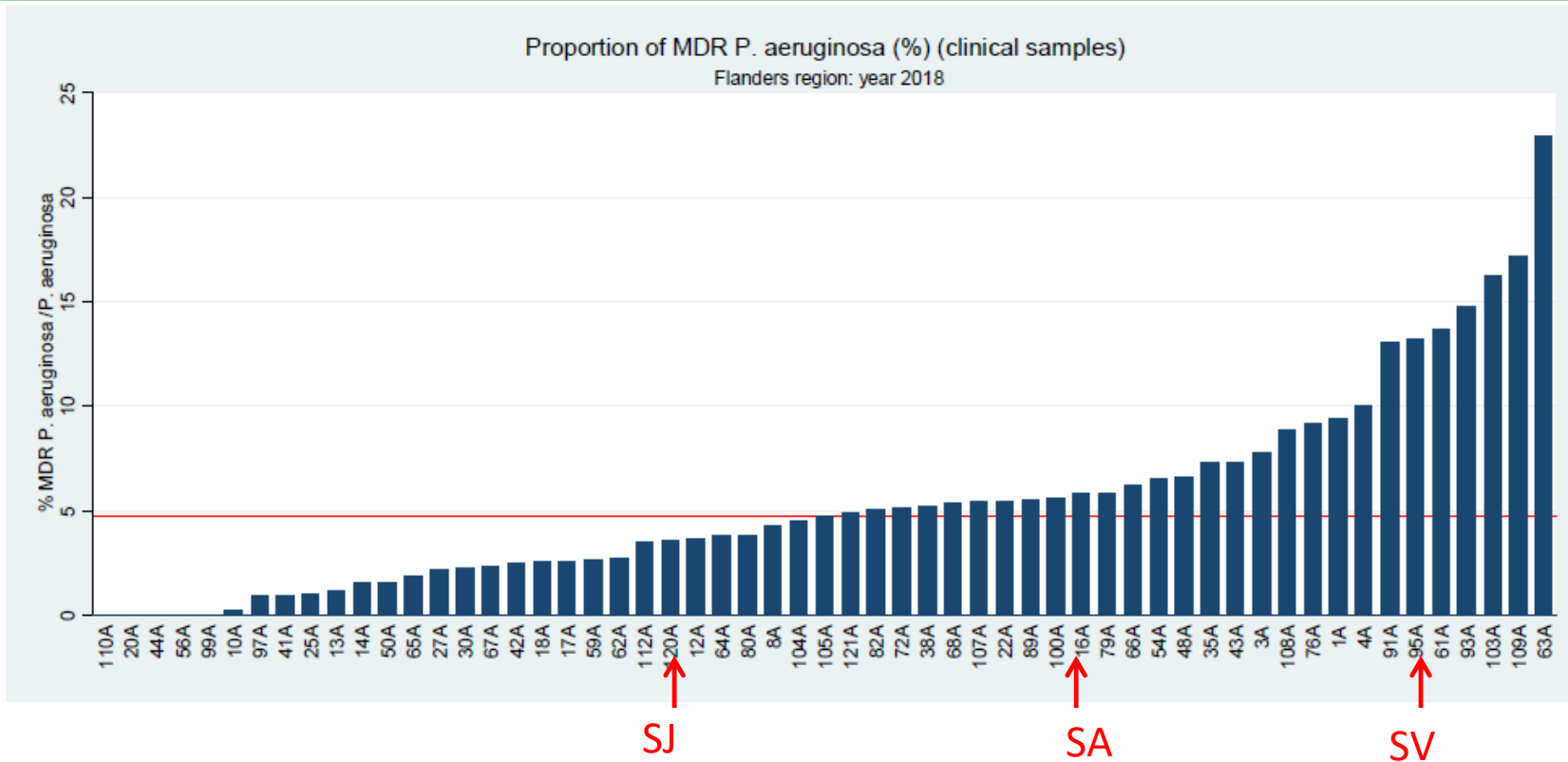
Resistance mechanisms in
Acinetobacter baumannii and in
Pseudomonas aeruginosa

P.aerug/BRMO

SA-

SV-SJ

FIGURE 14. PROPORTION OF MULTIRESISTANT *P. AERUGINOSA* (%) IF REGION = FLANDERS



Part 2: Gram-negative Bacteria



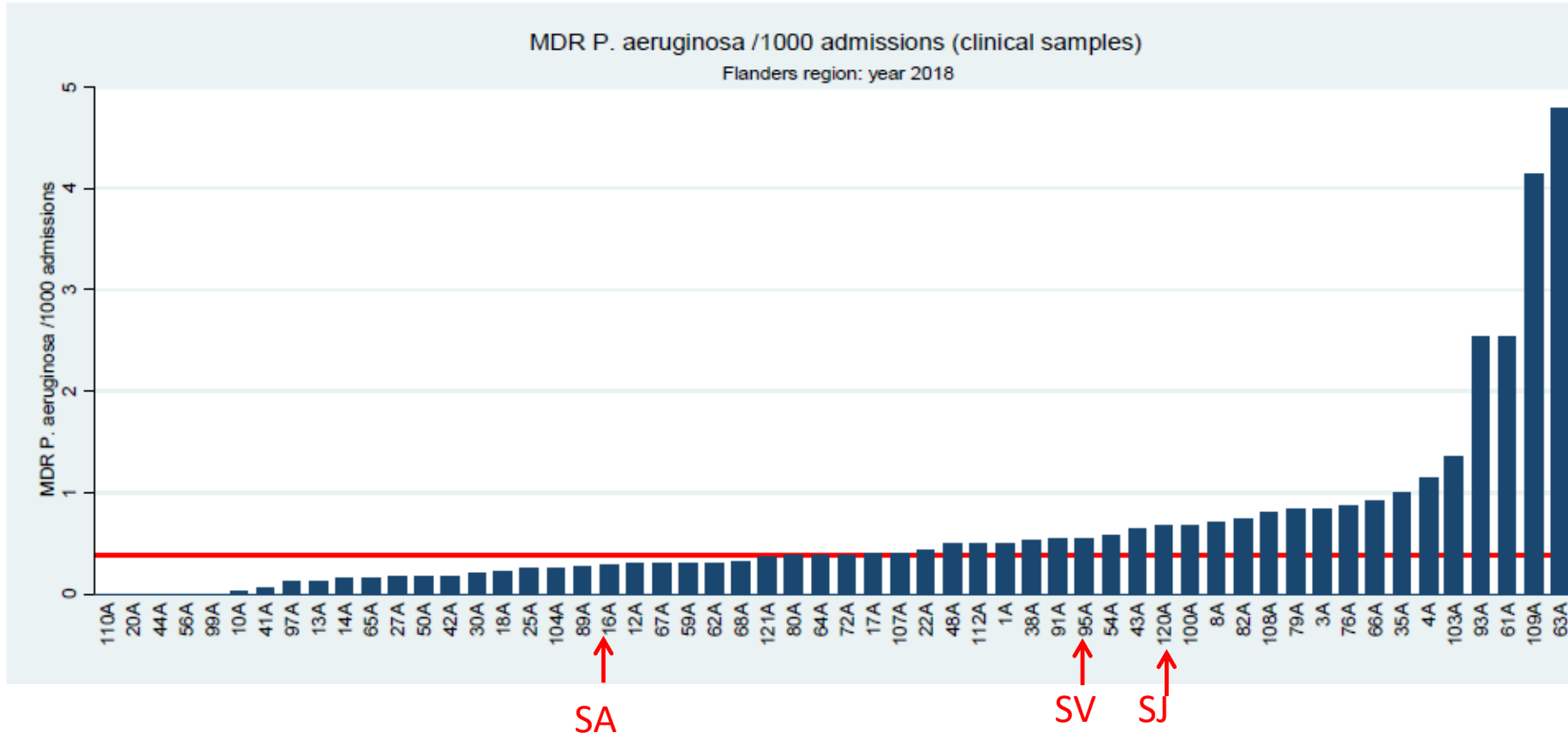
Resistance mechanisms in
Acinetobacter baumannii and in
Pseudomonas aeruginosa

P.aerug/BRMO

SA-

SV-SJ

FIGURE 15. INCIDENCE OF MULTIRESTANT *P. AERUGINOSA* (/1000 ADMISSIONS) IF REGION = FLANDERS



P. aeruginosa MDR/totaal (%)

